



13 Lord Louis Crescent

Mount Batten, Plymouth, PL9 9SH

£950,000



13 Lord Louis Crescent

Mount Batten, Plymouth, PL9 9SH

£950,000



LORD LOUIS CRESCENT, MOUNT BATTEN, PL9 9SH

THE HISTORY

The Crescent is located on the site of the former RAF Officers Mess at Mount Batten. The location is unprecedented and enjoys uninterrupted views over Plymouth Sound, Drakes Island & towards Kingsand and Cawsand together with the Breakwater and the South East Cornish coastline. The Crescent comprises of 17 four-storey properties designed by architect John Taylor MBE. The gated development is set within large landscaped grounds. Close by to the Mount Batten peninsula is the village of Turnchapel with its famous local pubs, Yacht Haven Marina is a stone's throw away with its own pub and restaurant. There is a water taxi across to Plymouth's famous Barbican. All in all this is one of the most wonderful locations to live within the area and a view of this exceptional property is highly recommended.

ACCOMMODATION

Front door opening into the kitchen/breakfast room.

KITCHEN/BREAKFAST ROOM

19'2 x 14'5 (5.84m x 4.39m)

A generous beautifully-fitted room with an extensive range of cabinets including a matching island complemented by polished stone work surfaces. Large inset stainless-steel sink with a separate inset half sink and a work-top mounted mixer tap. Aga with 6-burners and 4 oven/grills. Built-in Miele microwave. Conventional Miele oven set into the island. Integral Miele dishwasher. Integral Miele fridge and a separate freezer. Circular hard wood breakfast table. Wall-mounted gas boiler concealed by a matching cabinet. High ceiling with coving and inset ceiling spotlights. Hard wood flooring. 2 windows to the rear elevation. Double doors opening onto the first floor landing.

FIRST FLOOR LANDING

Recessed cloak cupboard with shelf. Hard wood flooring. Staircases with hard wood Newell posts, hand rails and a glass balustrade accessing the other floors. Further set of double doors opening into the dining room. Doorway opening to the cloakroom/wc.

FORMAL DINING ROOM

17'5 x 16'2 (5.31m x 4.93m)

A beautifully-appointed room with a high ceiling with ornate coving and ceiling rose. Ample space for dining table and chairs. Extensive range of fitted hand-built cabinets and shelving with grills concealing the radiators. Hard wood flooring. 2 sets of French doors opening onto a paved terrace with lovely views.

DOWNSTAIRS CLOAKROOM/WC

Fitted with a wc and a basin with a cabinet beneath. Party-tiled walls. High ceiling with coving and inset ceiling spotlights.

SECOND FLOOR LANDING

Doors providing access to the second floor accommodation. Recessed linen cupboard with slatted shelving and housing the hot water cylinder. Matching hard wood Newell post, hand rails and a glass balustrade. Stairs leading to the top floor.

BEDROOM ONE

17'8 x 13'1 (5.38m x 3.99m)

A fabulous master bedroom with a full-height bay window taking in the magnificent views over Plymouth Sound towards Drakes Island and the Cornish coastline also incorporating the Breakwater. High ceiling with ornate coving and ceiling rose. Doorway opening into the ensuite bathroom.

ENSUITE BATHROOM

11'3 x 8'1 (3.43m x 2.46m)

A beautifully-appointed ensuite bathroom comprising a free-standing bath with floor-mounted mixer tap and rinsing attachment, separate walk-in shower, fitted cabinet incorporating the basin, wc and bidet. Mirror over the basin. Storage cupboards. Fully-tiled walls. Tiled floor. Inset ceiling spotlights. High ceiling with coving. Doorway opening into the dressing room.

DRESSING ROOM

12'10 x 7'7 (3.91m x 2.31m)

Currently fitted out with a beautiful range of hard wood wardrobes and drawer units. This room could be used as an additional bedroom if required. High ceiling with coving. Inset ceiling spotlights. Window to the rear elevation.

BEDROOM THREE

10'1 x 9'2 (3.07m x 2.79m)

High ceiling with coving. Window to the front elevation.

SHOWER ROOM

5'8 x 5'2 (1.73m x 1.57m)

Comprising an enclosed shower, wc and pedestal basin with a mirrored cabinet with light over. Fully-tiled walls. High ceiling with coving. Inset ceiling spotlights.

TOP FLOOR LANDING

Providing access to the top floor accommodation. Loft hatch.

TOP FLOOR SITTING ROOM

20'2 x 17'9 max width (6.15m x 5.41m max width)

An absolutely stunning room with hard wood flooring throughout. High ceiling with ornate coving and ceiling rose. Built-in cabinet providing storage. Glazed display units also housing the flat screen TV. Matching cabinets. Concealed radiator. Further storage. Full-width windows and doors providing fantastic views over Plymouth Sound towards the Cornish coastline and access to the sun lounge.

SUN LOUNGE

17'3 x 7'9 (5.26m x 2.36m)

Tiled floor. Juliette-style balcony running across the full-width of the room. Full-width windows and sliding doors opening to the magnificent view.

BEDROOM TWO

14'2 x 8'11 (4.32m x 2.72m)

2 windows to the front elevation. Inset ceiling spotlights. Doorway opening into the ensuite shower room.

ENSUITE SHOWER ROOM

8'1 x 3'10 (2.46m x 1.17m)

Comprising an enclosed shower with glass shower screen, wash hand basin and wc. Wall-mounted mirror. Partly-tiled walls. Inset ceiling spotlights.

GROUND FLOOR HALLWAY

Tiled floor. Providing integral access to the garage. Storage cupboard

with shelving. Doors providing access to the hobbies room and utility room.

HOBBIES ROOM

17' x 12'2 (5.18m x 3.71m)

Coved ceiling. Inset ceiling spotlights.

UTILITY ROOM

7'6 x 6'10 (2.29m x 2.08m)

Base and wall-mounted cabinets with work surfaces. Stainless-steel single drainer sink unit. Space for appliances. Matching tiled floor.

GARAGE

19'3 x 17'2 (5.87m x 5.23m)

Remote door to the front elevation. Integral access to the property. Consumer unit. Power and lighting.

OUTSIDE

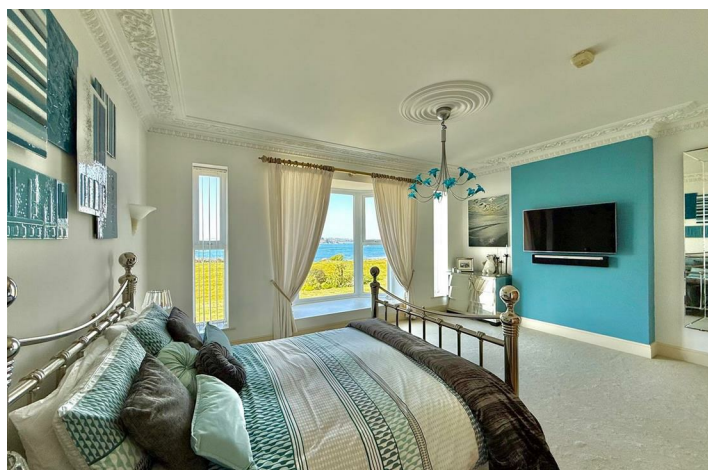
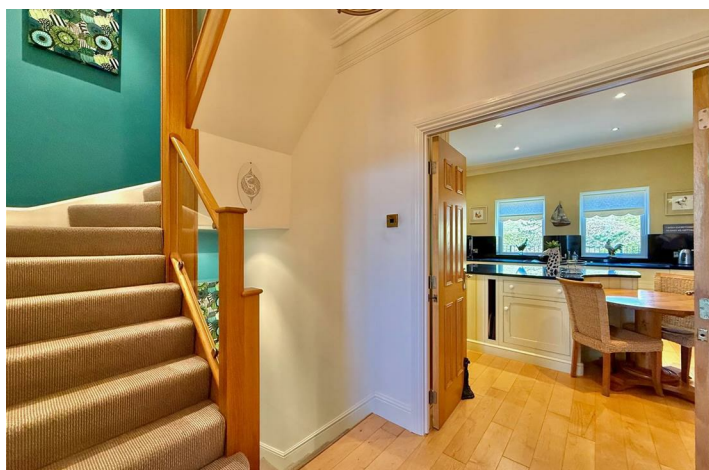
Lord Louis Crescent is set within a secure gated area with communal gardens, private and visitor parking. The grounds are laid to lawn with a variety of mature shrubs and small trees. Adjacent to the house itself is a paved patio area overlooking the grounds, Plymouth Sound and Drakes Island.

COUNCIL TAX

Plymouth City Council
Council tax. band G

AGENT'S NOTE

There is an annual management fee of £1400 for maintenance of the communal areas.



Road Map



Hybrid Map



Terrain Map



Floor Plan

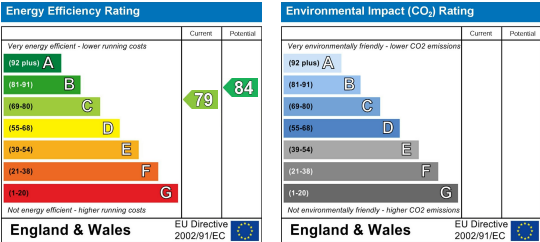


Made with Metropix ©2025

Viewing

Please contact our Plymouth Office on 01752 401128 if you wish to arrange a viewing appointment for this property or require further information.

Energy Efficiency Graph



These particulars, whilst believed to be accurate are set out as a general outline only for guidance and do not constitute any part of an offer or contract. Intending purchasers should not rely on them as statements of representation of fact, but must satisfy themselves by inspection or otherwise as to their accuracy. No person in this firm's employment has the authority to make or give any representation or warranty in respect of the property.